





IMPORTANT INFORMATION ABOUT YOUR DIESEL EXHAUST FLUID (DEF) SYSTEM
PAY CLOSE ATTENTION TO THESE WARNING LIGHTS AND TONES, THEN FOLLOW THE INSTRUCTIONS ACCORDINGLY

INFORMATION	DISPLAY MESSAGE (appears with a warning tone)	ACTION
DEF fluid is below the first warning threshold	 Refill Additive See Operator's Manual	Add at least 2.5 gal (9.5 l) of DEF*
DEF fluid level is below the reserve mark. The number of remaining engine starts XX (16 to 1) is shown in the message	 Refill Additive Starts until Emergency Op.: XXX See Operator's Manual	Add at least 2.5 gal (9.5 l) of DEF*
Emergency Operation: You can only drive vehicle at a maximum speed of 5 mph (8 km/h)	 Refill Additive Emergency Op.: XXX mph See Operator's Manual	Add at least 2.5 gal (9.5 l) of DEF*
DEF reducing agent is contaminated, diluted or is not compliant with ISO 22241	 +Symbol in instrument Cluster: Additive System Fault...	Visit a qualified specialist workshop immediately**

- Find additional information in the Sprinter Operating Instructions section “DEF”
- DEF range and fill level: On-board computer: “Service” -> “DEF”
- After adding DEF it can take up to 20 seconds for the indicator lamp to disappear, during this period the vehicle must remain stationary with ignition switched on or engine running
- In compliance with EPA regulations your engine will not start if you ignore all prior warnings and your DEF tank is empty

*Fill only with DEF ISO 22241

**Your vehicle may need to be towed to the nearest authorized service center

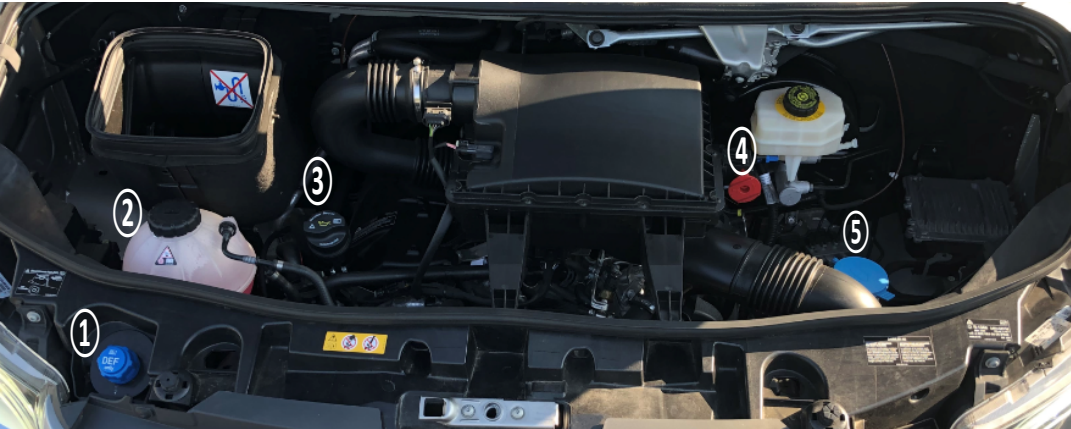
DRIVER ASSISTANCE SYSTEMS PORTFOLIO

Safety has many facets in the Sprinter: Modern support systems can support the driver in critical and confusing situations or with monotone driving tasks.

Driver Assistance Systems with Owners Manual Page Reference

Standard Equipment	Page	Optional Equipment	Page
ABS (Anti-Lock Braking System)	138	Active Brake Assist	140
ASC (Acceleration Skid Control)	138	Cruise control	142
BAS (Brake Assist System)	139 / 140	Active Distance Assist DISTRONIC	144
ESP® (Electronic Stability Program)	140	Parking Assist PARKTRONIC	146
EBD (Electronic Brake-force Distribution)	146	Rear view camera	148
Hill start assist.	146	360° Camera	150
HOLD function	146	Traffic Sign Assist	153
ATTENTION ASSIST	152	Blind Spot Assist	155
		Active Lane Keeping Assist	158

OVERVIEW OF THE ENGINE COMPARTMENT



- ① DEF filler neck cap

② Coolant expansion tank

③ Engine oil filler cap
- ④ Positive jump-starting connector

⑤ Windshield washer fluid reservoir cap

* shown on 6 Cylinder Diesel Engine*



Daimler Vans USA, LLC
One Mercedes-Benz Drive
Sandy Springs, GA 30328
1-877-762-8267 | SPRINTERVANSUSA.COM

All information contained in this publication has been approved as of the publication date, but details are subject to change. All rights reserved. Reproduction or translation in whole or part is not permitted without written authorization from the publisher. © 2018 Daimler Vans USA, LLC. A Daimler Company. Printed in the United States of America.

Part number: SMB-17-1065



Your Sprinter
QUICK REFERENCE GUIDE





YOU ASKED. WE ANSWERED.

We took your most frequently asked questions about your Sprinter Van and put the experts to work. The result? This handy quick guide full of answers.

Use it as your go-to tool for questions on everything from doors and lights to what's going on under the hood. For further information not listed here, refer to your Owner's Manual.

FUEL: DIESEL



Your New Sprinter Requires Ultra-Low Sulfur Diesel Fuel.

All stations pumping diesel fuel in the vicinity of an interstate must offer this fuel. This fuel is clear to yellowish in color.

Use fuels with Bio-Diesel content of 5% maximum whenever possible. (Owners Manual pg. 328)

NOTE: If gasoline is accidentally added to the fuel tank, this can cause catastrophic failures if vehicle is operated (not covered under Warranty).

If the problem is noticed immediately and only a small amount of gasoline has been added, it is possible to prevent severe damage by immediately draining and flushing the fuel system.



If this icon is displayed, it indicates water in the fuel. Drain the fuel filter with water separator immediately. Otherwise, the engine may be damaged.

Refer to the Owner's Manual or contact Roadside Assistance at 877-762-8267 for help.

FUEL: GASOLINE

Only use Fuel with a minimum Octane rating of 87. Only gasoline up to 10% ethanol is approved E10. Higher quality premium grade Fuels can always be used.

(Owners Manual pg. 326)

DEF SYSTEM AND SELECTIVE CATALYST REDUCTION (SCR)



Your new Sprinter utilizes the latest in Diesel Exhaust Fluid (DEF) technology, also known as Selective Catalyst Reduction (SCR). This fluid is injected into the exhaust stream ahead of the SCR Converter, reducing NOx

emissions and converting almost all of the Hydrocarbon and Nitrous Oxide emissions into harmless water vapor and Nitrogen. Should the DEF level drop down, advanced warnings will be displayed in the instrument cluster. Please remember DEF is not to be added to the coolant, the fuel tank, or the engine oil. Ensure you are filling at the correct location, avoiding inadvertent vehicle damage.

DEF and Mileage range will be displayed in Instrument cluster under the Service Menu. Levels below the reserve mark will activate refill reminder messages.

Note: Avoid overfilling the DEF tank.

When adding DEF after reaching the reserve level do not add more than 12 liters of DEF or approx. 3 gallons, to avoid overfilling of DEF tank. DEF level may not displayed if the DEF is frozen, wait 20 minutes for the Heaters to warm the fluid before reading.

FOR HELP IN MANAGING REFILLS, WE'VE INCLUDED A REMINDER DEF STICKER IN THIS GUIDE TO PLACE ON YOUR SUN VISOR.

DIESEL PARTICULATE FILTER (DPF)



Diesel Engines are equipped with a Diesel particulate filter which automatically regenerates. If your vehicle is used predominantly for short distance driving or extended non-operational times,

monitor the DPF filter load in the instrument cluster (service menu>diesel particular fill level) before reaching 100% drive on the freeway or county drive for 20 minutes. This will facilitate the regeneration of the diesel particulate filter.

(Owners Manual pg. 115).



KEYLESS START

Your new Sprinter is equipped with Keyless Start.

- Press once to turn on accessory power (without brake applied)
- Press twice to turn on ignition power (without brake applied)
- Press once with brake applied to start engine

JUMP STARTING

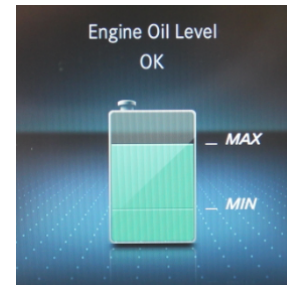
Push the red shroud back and twist to expose the connector. This is the place to attach the positive jumper cable. The negative connection is on the driver's side fender under the hood and looks like a brass post. If your vehicle is equipped with a battery under the hood, this is an auxiliary battery. **DO NOT ATTEMPT TO JUMP-START THE UNDER HOOD BATTERY!** This could be dangerous, allowing for potential explosion of the battery.

TURNING OFF MAIN BATTERY

Follow instructions in Owners Manual pg. 115. If vehicle is being stored for long periods remove Fuse 32 in Driver's Seat Base Fuse Block after switching Main Battery off.

CHECKING ENGINE OIL LEVEL

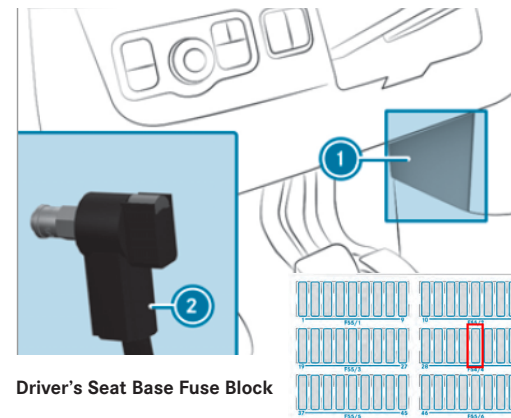
6-CYLINDER DIESEL ENGINE



Your vehicle oil level is checked via the On- board computer in the instrument cluster. Park vehicle on level ground. Select in Instrument cluster "service menu > oil level check" Add oil only when indicated. Must be MB specification.

(Owners Manual pg. 266, 267)

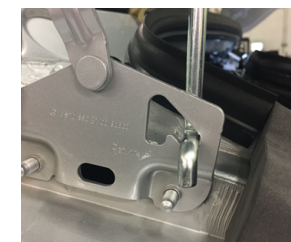
4-CYLINDER GASOLINE ENGINE



Driver's Seat Base Fuse Block

UNDER HOOD

Open the hood by pulling on the hood release handle located by the driver's left foot kick panel. There is a secondary safety catch that must be released by sliding your hand under the hood slightly to the left of the center to release the secondary safety catch. Lift hood and install prop rod



APPROVED ENGINE OILS

MB-Freigabe or MB-Approval

Gasoline Engine	MB-Freigabe or MB-Approval
M274	229.5
Diesel Engine	MB-Freigabe or MB-Approval
OM642/OM651	228.51, 229.31, 229.51, 229.52

THE ACTIVE SERVICE SYSTEM



Your vehicle is equipped with a variable oil change interval, ASSYST Active Service Sytem. Oil change intervals may vary from 7,000-20,000 miles based on driving style. The main purpose of the ASSYST system is to help the customer achieve a maximum vehicle powertrain life.

The ASSYST system will notify you via the instrument cluster when a service is required. Services alternate from A to B. Service intervals are based on several factors:

- Engine oil quality
- Average RPM level
- Towing
- Number of cold starts
- Trailer operation
- Idle time

TIRE PRESSRUE MONITORING SYSTEM (TPMS)

This system will alert you to a substantial tire pressure variation. Tire pressures are critical on any commercial vehicle but especially on a Passenger Van. It is important to check pressures at least monthly andbefore a long trip. The correct pressures are posted on a label on the driver's door frame.

Tire pressure will fluctuate depending on the current ambient temperature and the temperature of the tire.



DIRECT SELECT

You use the DIRECT SELECT lever to switch the transmission position. The current transmission position appears in the multifunction display.

MANUALLY OPERATING THE ELECTRIC SLIDING DOOR

If there is a dead battery or a malfunction the door can be disconnected for manual operation Turn release knob to manual then unlock door and open.

